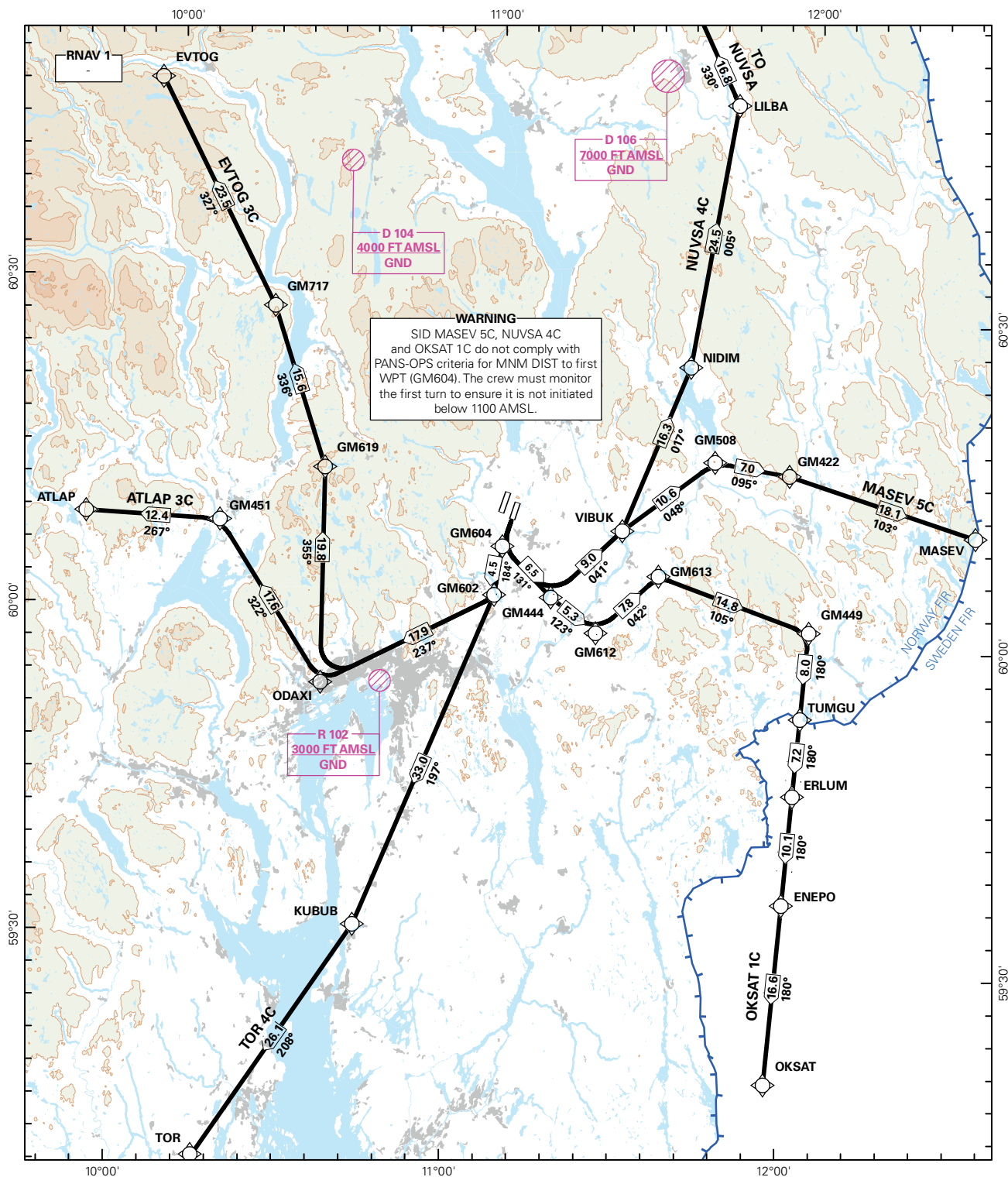


STANDARD DEPARTURE CHART INSTRUMENT (RNAV 1 SID BASED ON GNSS OR DME/DME)

<div><div></div><div>3₉</div><div>MSA 25 NM ARP</div></div>	ATIS: 127.150		ALT AND ELEV ARE IN FT DIST IN NM			GARDERMOEN RWY 19L NORWAY	
	APP: 120.450 118.475						
	TWR: 120.100 (123.325)						
	GND: 121.600 121.900						
			1:1 000 000	VAR: 2.8 ° E (2015)	TA 7000		
ATLAP 3C, EVTOG 3C, MASEV 5C, NUVSA 4C, OKSAT 1C, TOR 4C							



SID DESCRIPTION OVERLEAF
DESCRIPTION OF WAYPOINTS, REF ENR 4.4

ATS AIRSPACE CLASSIFICATIONS: REF ENR 1.4
LEGEND: REF GEN 2.3

CHANGES: D103, D154 WITHDRAWN.

**STANDARD DEPARTURE ROUTES - INSTRUMENT
(RNAV 1 SID BASED ON GNSS OR DME/DME)**
**OSLO/Gardermoen
RWY 19L**

GENERAL:	<p>Class A GNSS shall not be used. Radar service shall be available. Maximum speed below FL100: 250 KT IAS unless otherwise stated under RESTRICTIONS, or instructed by ATC.</p> <p>Due to simultaneous parallel departures, change to APP frequency shall always be initiated by GARDERMOEN TWR.</p>
RADIO COMMUNICATION FAILURE:	<p>SQUAWK A7600.</p> <p>In case of RCF after take-off, maintain last assigned level for 2 minutes, then climb to the cruising level stated in the CPL. ACFT under vectoring shall, after setting their transponder to A7600, continue on last cleared and acknowledged heading and level for 2 minutes, then proceed via the most direct route to join the cleared SID or route and climb to the cruising level stated in CPL.</p>
ATC CLEARANCE:	<p>Departing IFR flights shall contact "GARDERMOEN DELIVERY" to obtain ATC clearance. Specify stand number. Request for ATC clearance may take place at the earliest 30 minutes and at the latest 10 minutes prior to anticipated engine start-up. Listening watch shall thereafter be maintained on "GARDERMOEN DELIVERY".</p>
NON RNAV 1 ACFT:	<p>At first contact with "GARDERMOEN DELIVERY" state "UNABLE RNAV 1". OMNI-DIRECTIONAL DEPARTURE available (see ENGM AD 2.24).</p>
NOTE	<p>The segment distances from GM604 to GM444, from GM444 to VIBUK, from GM508 to GM422, from GM444 to GM612, from GM612 to GM613, from GM613 to GM449, from GM602 to ODAXI, from ODAXI to GM619 and from GM619 to GM717 are based on average flight path criteria.</p>

DESIGNATOR	ROUTE	RESTRICTIONS	CLIMB TO	CONTACT
ATLAP 3C (ATLAP THREE CHARLIE DEPARTURE)	To GM604 on course 193°, to GM602, to ODAXI, to GM451, to ATLAP.	A MNM climb gradient of 6.6% i.e. 401 FT/NM is required until reaching 5000 FT. If unable to comply, inform ATC. MAX speed 230 KT IAS at GM604.	7000 FT Expect further climb from OSLO APP	When instructed by GARDERMOEN TWR contact OSLO APP 120.450 MHZ
EVTOG 3C (EVTOG THREE CHARLIE DEPARTURE)	To GM604 on course 193°, to GM602, to ODAXI, turn right to GM619, to GM717, to EVTOG.	A MNM climb gradient of 6.6% i.e. 401 FT/NM is required until reaching 5000 FT. If unable to comply, inform ATC. MAX speed 230 KT IAS at GM604.	7000 FT Expect further climb from OSLO APP	When instructed by GARDERMOEN TWR contact OSLO APP 120.450 MHZ
MASEV 5C (MASEV FIVE CHARLIE DEPARTURE)	To GM604 on course 193°, to GM444, turn left to VIBUK, to GM508, to GM422, to MASEV	A MNM climb gradient of 6.6% i.e. 401 FT/NM is required until reaching 5000 FT. If unable to comply, inform ATC. No turn below 1100 FT. MAX speed 230 KT IAS at GM604.	7000 FT Expect further climb from OSLO APP	When instructed by GARDERMOEN TWR contact OSLO APP 118.475 MHZ
NUVSA 4C (NUVSA FOUR CHARLIE DEPARTURE)	To GM604 on course 193°, to GM444, turn left to VIBUK, to NIDIM, to LILBA, to NUVSA.	A MNM climb gradient of 6.6% i.e. 401 FT/NM is required until reaching 5000 FT. If unable to comply, inform ATC. No turn below 1100 FT. MAX speed 230 KT IAS at GM604.	7000 FT Expect further climb from OSLO APP	When instructed by GARDERMOEN TWR contact OSLO APP 118.475 MHZ
OKSAT 1C (OKSAT ONE CHARLIE DEPARTURE)	To GM604 on course 193°, to GM444, to GM612, to GM613, to GM449, to TUMGU, to ERLUM, to ENEPO to OKSAT.	A MNM climb gradient of 6.6% i.e. 401 FT/NM is required until reaching 5000 FT. If unable to comply, inform ATC. No turn below 1100 FT. MAX speed 230 KT IAS at GM604.	7000 FT Expect further climb from OSLO APP	When instructed by GARDERMOEN TWR contact OSLO APP 118.475 MHZ
TOR 4C (TORP FOUR CHARLIE DEPARTURE)	To GM604 on course 193°, to GM602, to KUBUB, to TOR.	A MNM climb gradient of 6.6% i.e. 401 FT/NM is required until reaching 5000 FT. If unable to comply, inform ATC. MAX speed 230 KT IAS at GM604.	7000 FT Expect further climb from OSLO APP	When instructed by GARDERMOEN TWR contact OSLO APP 118.475 MHZ